



**GEOJIT**

PEOPLE YOU PROSPER WITH

# AGRI PICKS

*A Daily Report on Agricultural Commodities*

Wednesday, February 10, 2021

## TODAY'S PICKS

### AGRI BUZZ

- Sugar prices are unlikely to rise significantly in the near term due to a possible surplus of the sweetener in the domestic market, ratings agency ICRA said in a report.
- India is likely to witness another year of record wheat production at 115 mln tn for 2020-21 (Jul-Jun) due to high acreage and better yields, Indian Institute of Wheat and Barley Research Director Gyañendra Pratap Singh told Informist.
- The farm ministry has approved the procurement of 79,300 tn of masur by National Agricultural Cooperative Marketing Federation of India in Madhya Pradesh under the price support scheme, an official with the agency said.
- The government has purchased 9,708 tn of tur harvested in the 2020-21 (Jul-Jun) kharif season from farmers in Karnataka, Maharashtra and Gujarat under the price support scheme as of Thursday, a government official said.
- The government has sanctioned around 18.7 mln Kisan credit cards with an overall credit limit of over 1.76 trln rupees under the special saturation drive as of Jan 29, Minister of State for Finance Anurag Singh Thakur said in a written reply to Rajya Sabha. The drive began in February 2020.
- The Centre has approved procurement of chana, urad, and moong in Andhra Pradesh and masur in Madhya Pradesh grown during the 2020-21 (Jul-Jun) rabi season under the price support scheme.
- Food Corp of India has rented 11 silos with capacity of 775,000 tn across the country to add to the storage space in the central pool, Minister of State for Consumer Affairs, Food and Public Distribution Raosaheb Danve said in the Lok Sabha.

	Futures	Spot
Contract/spot	JEERA - MAR21	Unjha
Rate	13360	13083.35
% chg	1.52	1.12
1 week low	12970	12870.6
1 week High	13500	13083.35
	Futures	Spot
Contract/spot	CHANA - MAR21	Bikaner
Rate	4643	4612
% chg	0.13	0.64
1 week low	4527	4526.2
1 week High	4705	4650
	Futures	Spot
Contract/spot	SOYABEAN - FEB21	Indore
Rate	4775	4901
% chg	1.29	1.53
1 week low	4610	4715
1 week High	4820	4901
	Futures	Spot
Contract/spot	CASTOR SEED - FEB21	Deesa
Rate	4398	4503.55
% chg	0.27	0.08
1 week low	4370	4500
1 week High	4428	4517.85
	Futures	Spot
Contract/spot	RUBBER - FEB21	Kottayam
Rate	15300	15500
% chg	-1.05	1.89
1 week low	15200	0
1 week High	15500	0

	Futures	Spot
Contract/spot	TURMERIC	Nizamabad
Rate	0	6876.45
% chg	0	4.45
1 week low	0	6483.35
1 week High	0	6876.45
	Futures	Spot
Contract/spot	GUAR SEED10 - FEB21	Jodhpur
Rate	3957	3991.8
% chg	0.1	0.34
1 week low	3892	3914.3
1 week High	3998	3991.8
	Futures	Spot
Contract/spot	REFINDED SOYA OIL - FEB21	Kandla
Rate	1130.6	1125.65
% chg	1.37	0.96
1 week low	1098.6	1102.85
1 week High	1134.1	1125.75
	Futures	Spot
Contract/spot	KAPAS - FEB21	Rajkot
Rate	1172	1175.7
% chg	1.34	0.5
1 week low	1141	1137.1
1 week High	1178	1175.7
	Futures	Spot
Contract/spot	MAIZE - Feed/Industrial Grade	Gulabbagh
Rate	0	1440
% chg	0	0.35
1 week low	0	1410
1 week High	0	1440

	Futures	Spot
Contract/spot	CORIANDER - APR21	Kota
Rate	6512	6180
% chg	2.62	3
1 week low	6176	6000
1 week High	6574	6205
	Futures	Spot
Contract/spot	Guar Gum Refined Splits - FEB21	Jodhpur
Rate	6320	6350
% chg	0.57	0.61
1 week low	6183	6208.1
1 week High	6380	6362.5
	Futures	Spot
Contract/spot	RAPE MUSTARD SEEDS - FEB21	Jaipur
Rate	5915	6300
% chg	1.04	0.39
1 week low	5678	6200
1 week High	5959	6300
	Futures	Spot
Contract/spot	COTTON SEED OIL CAKE AKOLA - FEB21	AKOLA
Rate	2285	2380
% chg	0.44	1.28
1 week low	2152	2228.2
1 week High	2320	2380
	Futures	Spot
Contract/spot	BARLEY - APR21	Jaipur
Rate	1657	0
% chg	0	0
1 week low	1656	0
1 week High	1666	0

## SPICES COMPLEX

### Market Buzz

- Jeera March futures on NCDEX stretched gains on Tuesday supported by steady demand. However, prospects of better crop this rabi season may cap gains.
- According to the second advance estimates released by the Gujarat’s farm department, production in jeera is expected to be at 373700 tonnes in 2020-21 compared to 375420 tonnes produced last year (2019-20).
- According to Gujarat’s farm department, as of 28 Dec2020, jeera has been sown across 464469 hectares in state, compared to 435657 hectares sown during the same period last year.
- Spices Board pegs Apr-Sep jeera exports at 153000 tonnes, up by 33 per cent on yoy basis.
- Exports of jeera were at 210,000 tn, up 16% from 180,300 tn in 2018-19 according to the Spices Board.
- NCDEX Coriander April futures gained more than 2.5 per cent on Tuesday to hit its highest level in more than two months on strong demand.
- Coriander production in Gujarat is expected to rise 55 per cent to 216680 tonnes in 2020-21 season (Jul-Jun) due to sharp rise in acreage according to the state’s farm department’s second advance estimates.
- As of Dec 28, 2020 coriander has been sown across 135563 hectares compared to 76904 hectares sown during the same period last year showed the data from the Gujarat state farm department.
- According to Spices Board of India data, coriander exports for the Apr-Sep period this year is seen at 26750 tonnes, up by nine per cent on yoy basis.
- Coriander exports from India were up 3% on year at 50,250 tn in the last financial year according to the Spices Board.
- Turmeric April futures on NCDEX continued rising to hit it highest level in about two years on Tuesday, gaining four per cent. Relatively low arrivals hitting the market despite being the arrival season and expectation of lower crop lend support amidst firm demand.
- Spices Board pegs turmeric export from India for the period Apr-Sep this year at 99000 tonnes, up by 42 per cent year on.
- India exported 136,000 tn of turmeric in 2019-20, up 2% on year according to the Spices Board.



TECHNICAL VIEW

<b>JEERA NCDEX MAR</b>	Dips to 13260-13200 may not be ruled out before resuming rising. A direct rise above 13500 may call for 13650 or more.	
<b>DHANIYA NCDEX APR</b>	Dips to 6420-6320 ranges may not be ruled out before resuming rising. A direct rise above 6600 may call for 6680/6740 or more.	
<b>TURMERIC NCDEX APR</b>	While there prevails positive bias, corrective dips to 7340/7270-7200 may not be ruled out.	
<b>CARDAMOM MCX FEB</b>	Choppy to trades expected.	

## OILSEED COMPLEX

### Market Buzz

- All commodities, in the edible complex traded higher yesterday. MCX Feb CPO prices extended its previous day's gains tracking strength in BMD Malaysian palm oil futures on back of improved buying at lower price levels. Mar Soy oil prices also traded higher on back of improved demand for edible oil in the wholesale markets from hotels and restaurants.
- NCDEX Mar soybean traded higher on back of firm export demand for soymeal along with gains in U.S CBOT soybean prices. Apr NCDEX Mustard seed prices traded higher due to demand from oil millers amid shortage of stocks.
- India is likely to produce around 10 mln tn of mustard in 2020-21 (Jul-Jun), up 35% from a year ago, due to higher acreage and favourable weather conditions, according to the Solvent Extractors' Association of India.
- The government has proposed agriculture infrastructure and development cess on key edible oils in the Union Budget for 2021-22 (Apr-Mar). In the case of crude palm oil, the cess would lead to rise in overall effective duty by 5.5 percentage points to 35.75%. No major changes is seen in effective crude soyoil duty and crude sunflower oil.
- The US Department of Agriculture has scaled down its estimate for global oilseed production in 2020-21 to 594.5 mln tn from 595.7 mln tn projected in December. Higher production of sunflower seed would largely be offset by lower soybean, cottonseed, peanut, rapeseed, and palm kernel output. The sunflower seed production estimate for Russia has been increased by 0.5 mln tn to 13.5 mln tn, based on recent government estimates. In its report for January, the agency has also slashed its estimate for closing stocks of oilseeds to 96.5 mln tn from 97.8 mln tn projected the previous month. Global oilseed trade in 2020-21 is projected at 192.7 mln tn, against 191.8 mln tn in the agency's previous estimate. It has scaled down its forecast for global soybean crop to 361.0 mln tn against 362.1 mln tn projected in December. "Higher soybean crops for Canada and Uruguay are offset by lower production for Argentina, which has reduced 1 mln tn to 50 mln on lower harvested area," the report said. Lower soybean output in Argentina, the third-largest producer, brings down the country's crush and soymeal exports. This, in turn, supports the US' soybean exports, the agency said. It has forecast overall soybean output in the US in 2020-21 at 112.6 mln tn, against 113.5 mln tn projected the previous month, owing to lower cottonseed production. The estimate for Argentina's soybean output has been slashed by 2 mln tn to 48 mln tn.
- Soymeal exports were at 251,221 tn in December against 72,233 tn a year ago, while in Apr-Dec, soymeal exports were at 888,202 tn compared with 569,349 tn a year ago, according to data released by The Solvent Extractors' Association of India. Mustard meal exports in Apr-Dec were at 141,866 tn, up around 136% from a year ago.
- India's vegetable oil imports rose over 20% on year to around 1.35 mln tn in December, according to SEA.
- India's soymeal exports in December jumped nearly three-fold on year to 268,000 tn, data from The Soybean Processors Association of India showed. Soymeal exports in December a year ago were at 90,000 tn.
- As on Dec 31, farmers, processors, stockists and state-run agencies had around 400,000 tn stock, compared with nearly 1.2 mln tn a year ago, according to Mustard Oil Producers Association of India.
- Farmers in the country have sown mustard across 6.9 mln ha, up 10.6% on year, in 2020-21 (Jul-Jun) season so far, data from the farm ministry.
- Indian government slashed import duty of crude palm oil. The government cut import duty on crude palm oil by 10% to 27.5%, in the last week, to cool off soaring edible oil prices in domestic markets.
- The area under major kharif crops so far in 2020-21 (Jul-Jun) was at 111.7 mln ha, up nearly 5% from a year ago, farm ministry data showed. The area under soybean across the country rose 6.4% on year to 12.12 mln ha as of 24th Sep, according to data from the farm ministry. The Union Cabinet approved a hike in minimum support price for 14 major kharif crops. MSP for soybean hiked by Rs.170 to 3880 from 3710 per 100 kg. Soybean output is estimated at 12.2 mln tn in 2019-20, according to the farm ministry's fourth advance estimate.
- India is likely to grow a record 10 mln tn mustard crop in 2020-21 (Jul-Jun), mainly due to the likelihood of a sharp rise in acreage, according to Solvent Extractors' Association of India. The government has targeted an all-time high crop of 12.5 mln tn for this rabi season. The government has fixed the minimum support price at 4,650 rupees per 100 kg for 2020-21 (Apr-Mar) marketing season against 4,425 rupees per 100 kg the previous year.
- According to the first advance estimates for 2020-21 (Jul-Jun), castor seed output is seen at 1.7 mln tn compared with 1.8 mln tn in the fourth advance estimates for 2019-20, according to the data released by the farm ministry. While, according to traders, crop is seen at 1.5-1.6 mln tn. Farmers have sown castor seed across 792,000 ha in 2020-21 (Jul-Jun), down 16% from a year ago.
- India's castor oil exports jumped 41.6% on year to 53,007 tn in September, according to data from Solvent Extractors' Association of India. The exports have surged 28% from 41,408 tn in August. India's castor meal exports plunged by 26% on year to 54,885 tn in October from 73,832 tonnes, according to data released by The Solvent Extractors' Association of India. Moreover, overall export of oil meals during Apr-Oct plunged 43% on year to 382,238 tn.
- Malaysia's crude palm oil output plunged 10.6% on month to 1.33 mln tn in December, data from Malaysian Palm Oil Board. Total palm oil stock in the country fell 19.0% on month to 1.26 mln tn. Exports of palm oil in December rose 24.7% on month at 1.62 mln tn and those of biodiesel rose 111.3% on month to 42,913 tn.
- Malaysia's palm oil exports during Jan 1-20 are estimated down 43.3% on month at 572,910 tn, cargo surveyor SGS (Malaysia) data showed.



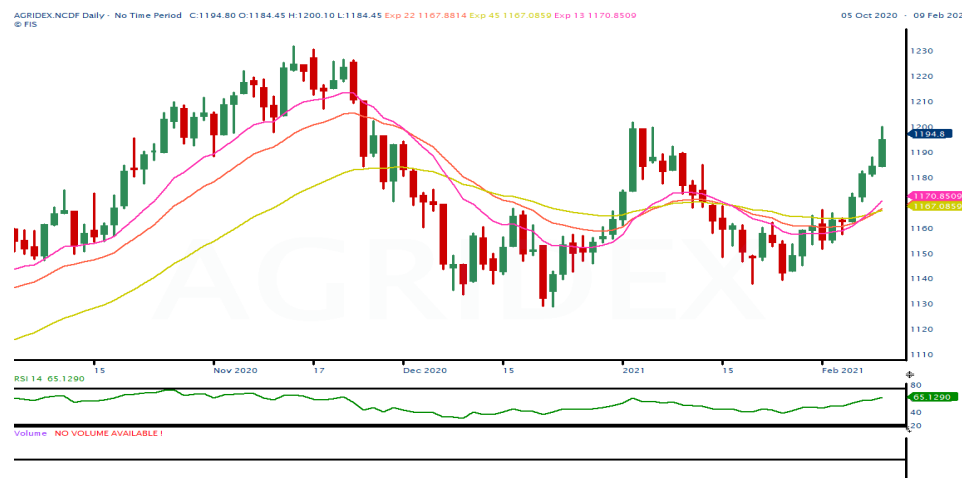
TECHNICAL VIEW

<b>SOYBEAN NCDEX MAR</b>	As prices broke the resistance of 4700 levels sentiments turned bullish and expect to trade higher towards 4820 levels.	
<b>REF SOY OIL NCDEX MAR</b>	While prices sustain above 1120 could push the prices higher to 1135/1140 levels.	
<b>RMSEED NCDEX APR</b>	As long as prices sustain to trade above 5175 could see major upside moves targeting 5250/5280 levels.	
<b>CASTOR NCDEX MAR</b>	Inability to move above 4478 could see downside correction towards 4350/4320 levels in the near term.	
<b>CPO MCX FEB</b>	Expect to see more upside moves targeting 1022/1030 levels.	





## COTTON COMPLEX

### Market Buzz

- Arrivals of cotton in spot markets rose to 150,000 bales (1 bale = 170 kg) yesterday from 139,000 bales on Monday, trade sources said.
- The Cotton Association of India has raised its production estimate to 36.0 mln bales (1 bale = 170 kg) from 35.9 mln bales projected in the previous month, for the ongoing 2020-21 (Oct-Sep) season. In 2019-20, the association had pegged the crop at 36.0 mln bales. It has maintained its estimate for exports at 5.4 mln bales (1 bale = 170 kg) for the ongoing 2020-21 (Oct-Sep) season. In the current marketing year, India has shipped around 2.9 mln bales up to January. Domestic consumption is estimated at 33.0 mln bales in 2020-21, while imports are pegged at 1.4 mln bales. Ending stocks in the country for the 2020-21 season are seen at 11.5 mln bales, it said. Of the total crop, around 25.5 mln bales have arrived till January.
- The USDA has cut its estimate for India's 2020-21 (Aug-Jul) cotton output to 28.9 mln bales (1 US bale = 218 kg) due to lower yields. It had pegged the output at 29.5 mln bales in December. The impact of excess Northeast monsoon rains and increasing incidence of pest infestation will likely negatively impact yields, especially in the state of Telangana said in its January report. Cotton consumption in the current season is seen at 23.6 mln bales, against 23.0 mln bales projected in the previous month. Strong export demand for cotton yarn and lower prices of the fibre in the domestic market led to rise in consumption. The agency has raised its export estimate to 5.0 mln bales, compared with 4.8 mln bales a month ago. Imports are seen steady at 1.0 mln bales. In 2020-21, the closing stock of cotton for the country has been pegged at 18.9 mln bales in January, compared with 20.4 mln bales projected in December.
- The International Cotton Advisory Committee has raised its forecast for global prices in 2020-21 (Aug-Jul) due to lower production estimate and firm demand in its February report. They revised upwards its price forecast for Cotlook A index, a global benchmark for prices of raw cotton, by 4 cents from the previous month to 73 cents per pound. Global production for the ongoing season is currently estimated at 24.1 mln tn, down 8% from the previous season. The fall in output estimate has largely been attributed to a smaller crop in the US, Brazil, and Pakistan. Production in India is expected at 6.20 mln tn, compared with 6.07 mln tn in the previous year. The committee has estimated global consumption at 24.1 mln tn, compared with 22.8 mln tn last year. Similarly, global exports are seen higher at 9.3 mln tn, compared with 9.0 mln tn year ago. Global ending stock is estimated at 21.2 mln tn for the current season.
- In the Union Budget for 2021-22 (Apr-Mar), Finance Minister Nirmala Sitharaman proposed customs duty of 5% on cotton and 10% on cotton waste. She also proposed an Agriculture Infrastructure and Development Cess of 5% on cotton, taking the overall customs duty to 10%. Customs duty on raw silk and silk yarn or yarn spun from silk waste has been increased to 15% from 10% earlier.
- The UK-based Cotton Outlook has marginally raised its estimate for global output in 2020-21 (Aug-Jul) by 32,000 tn to 24.02 mln tn in its January report. The estimate has been scaled up largely due to upward revision in production in China. A slight reduction in production is seen in the US. The agency has maintained its estimate for India's cotton crop at 6.2 mln tn for the ongoing season. Production in the US is seen at 3.3 mln tn, against 3.5 mln tn projected a month ago. Global cotton consumption in 2020-21 is seen at 24.5 mln tn, against 24.3 mln tn projected the previous month. Consumption is seen higher on likely rise in demand from India and Turkey. Ending stocks of the fibre for 2020-21 are seen at 466,000 tn, against 325,000 tn projected last month.
- Cotton yarn prices in India have risen sharply mainly due to improved demand from the domestic downstream segments as well as continued strong overseas demand during Oct-Dec, rating agency ICRA said in a release.
- The USDA has scaled down its estimate for global cotton output for 2020-21 (Aug-Jul) to 112.9 mln bales (1 US bale = 218 kg) from 113.9 mln bales pegged in December. The downward revision in output estimate is mainly due to a fall in production in the US. The agency has cut its estimate for output in the US to 14.95 mln bales, compared with 15.95 mln bales projected a month ago. Global cotton consumption is seen at 115.7 mln tn, marginally higher from 115.6 mln bales pegged last month. Exports are now seen at 43.6 mln bales, compared with 43.2 mln bales, while ending stocks are seen lower at 96.3 mln bales, compared with 97.5 mln bales. The agency retained its crop estimates for India at 29.5 mln bales. India's exports for the current season is pegged at 5.0 mln bales. Domestic demand is seen at 24.0 mln bales steady from previous month. Ending stock for the ongoing season is seen at 19.4 mln bales.
- Cotton production in Gujarat is likely to fall 14% to 7.4 mln bales in 2020-21 (Jul-Jun) due to a sharp decline in acreage, according to the state farm department's second advance estimate. Cotton acreage in Gujarat is at 2.28 mln ha in the current season against 2.65 mln ha last year. The decline in acreage is mainly due to the shift to other lucrative crops like groundnut.
- Global cotton prices will likely average higher on a year-on-year basis in 2021 amid a broader and deeper economic recovery, Fitch Solutions says in a note. It is forecasting cotton prices to average 70c a pound in 2021. Lower global supply in 2020/21 coupled with the sharp uptick in China's import demand will keep prices supported.
- The much awaited and long delayed export agreement between Cotton Corp of India and Bangladesh government is now in its final stage and may materialise by December, said Pradeep Agarwal, chairman and managing director of the organisation.
- The area under major kharif crops so far in 2020-21 (Jul-Jun) was at 111.7 mln ha, up nearly 5% from a year ago, farm ministry data showed. Farmers have sown cotton across 13.04 mln ha in the 2020-21 (Jul-Jun) season, up by 2.1% from a year ago, as of 25th Sept., farm ministry.
- India's cotton output in the 2020-21 (Oct-Sep) marketing year is seen at 38.0 mln bales (1 bale = 170 kg), up 4% on year, according to traders' pegs 2020-21 cotton crop at 37.1 mln bales vs 35.5 mln bales.
- Cotton production in Gujarat is likely to fall by 6% to 8.2 mln bales in 2020-21 (Jul-Jun) due to a sharp fall in acreage, according to the first advance estimates released by the state's farm department. Cotton acreage in Gujarat is down at 2.28 mln ha in the current season compared with 2.65 mln ha last year. The fall in sowing area is mainly due to the shift to other lucrative crops like groundnut.
- Govt cuts 2019-20 cotton output view to 35.5 mln bales vs 36.0 mln.
- The government has raised the support price of medium staple cotton by 260 rupees per 100 kg to 5,515



### TECHNICAL VIEW

<p><b>AGRIDEX NCDEX</b></p>	<p>As long as prices stays above 1180 expect to see more upside moves targeting 1202/1210 levels.</p>	
<p><b>KAPAS NCDEX APR21</b></p>	<p>As prices broke the resistance of 1225 could see bounce back to 1240/1250 levels.</p>	
<p><b>COTTON MCX FEB</b></p>	<p>Positive moves are more likely to see further towards 21600/21650 levels.</p>	
<p><b>COCUDAKL NCDEX MAR</b></p>	<p>As long as prices stays above 2250 could push the prices higher to 2330/2350/2380 levels.</p>	

OTHERS

Market Buzz

- Chana March futures on NCDEX inched up on Tuesday. However, expectation of bigger crop this rabi season kept gains under check.
- The center is expected to purchase about 600000 tons of Chana harvested in 2020-21 under the price support scheme from the farmers in Madhya Pradesh.
- Farmers in the country have sown rabi chana across 11.2 million hectares so far, up 4.4 per cent compared to same period last year , farm ministry data showed.
- The National Agricultural Cooperative Marketing Federation of India has offered discount of 5-10% on chana produced in the 2019-20 (Jul-Jun) rabi season, and subsequently procured by the agency at the minimum support price for that year, according to its website.
- The government raised chana MSP by Rs.225 to Rs.5100/100kg.
- Guarseed and Guargum March futures on NCDEX traded firm on Tuesday tracking gain in crude oil.
- India’s guar gum exports improved in the month of December 2020 by 32% to 17,644 tonnes compared to 13,414 tonnes during November 2020 at an average FoB of US \$ 1849 per tonne in the month of December compared to US \$ 1611 per tonne in the month of November 2020. However, the gum shipments were down -1% in December 2020 compared to the same period last year. Of the total exported quantity, around 4,914 tonnes is bought US, Russia (3,290 tonnes) and Germany (2,432 tonnes).
- India’s guar split exports fell in the month of December 2020 by -39% to 2,800 tonnes compared to 4,557 tonnes during November 2020 at an average FoB of US \$ 955 per tonne in the month of December compared to US \$ 1,390 per tonne in the month of November 2020. Further, the guar split shipments were up +32% in December 2020 compared to the same period last year. Of the total exported quantity, around 1,880 tonnes is bought China, US (800 tonnes) and Switzerland (120 tonnes).
- Firm demand, rise in crude oil prices, cues from the overseas market and upbeat auto-sales data lifted natural rubber in the Indian market to two month high on Tuesday.
- MCX has delivered 70 tons of rubber on the settlement of its first-month expiry of January contract.
- Kerala government is set to raise the guarantee price for RSS4 grade rubber under Rubber Production Incentive Scheme from existing Rs.150 a kg to Rs.170 a kg with effective from April 1, 2021 as per the state budget presented on Jan 15, 2021.
- Global production of natural rubber in January is expected to recover to 1.19 mln tn from 1.05 mln tn a year ago, the Association of Natural Rubber Producing Countries said in a release. Globally, consumption of natural rubber during the month is likely to increase 15.5% on year to 1.17 mln tn, the release said. During Jan-Nov 2020, global production of natural rubber contracted 8.3% on year to 11.37 mln tn, while global consumption posted a fall of 7.9% on year to 11.66 mln tn. For December 2020, production of natural rubber is likely to fall 8.9% on year. However, consumption is likely to recover 3.6% to 1.16 mln tn.



TECHNICAL VIEW

<b>CHANA NCDEX MAR</b>	Zigzag move inside 4700-4580 expected.	
<b>GUARSEED NCDEX MAR</b>	Dips to 3990-3970 ranges may not be ruled out. However, slippage past 3950 may see weakness creeping in.	
<b>GUARGUM NCDEX MAR</b>	A voluminous rise above 6500 is necessary more up-sides. As long as this range caps, dips to 6350-6300 or more seems possible.	
<b>RUBBER MCX FEB/ICEX MAR</b>	While there is a mild positive bias, a voluminous rise above 16000 is required for the upswing to continue. Else, choppy moves inside 16000-15400 seems to be likely.	

TECHNICAL LEVELS

Commodity	Contract	Open*	High*	Low*	Close*	S3	S2	S1	Pivot	R1	R2	R3
<b>SPICES</b>												
Jeera	MarNCDEX	13250	13500	13230	13360	12957	13093	13227	13363	13497	13633	13767
Turmeric	AprNCDEX	7098	7420	7052	7420	6807	6929	7175	7297	7543	7665	7911
Cardamom	MarMCX	1500	1500	1500	1500	1500	1500	1500	1500	1500	1500	1500
Dhaniya	AprNCDEX	6418	6574	6254	6528	6010	6132	6330	6452	6650	6772	6970
Menthaoil	FebMCX	958.0	961.7	953.5	957.0	945	949	953	957	961	966	970
<b>PULSES</b>												
Chana	MarNCDEX	4640	4672	4627	4644	4578	4603	4623	4648	4668	4693	4713
Guarseed	MarNCDEX	3991	4045	3991	4006	3929	3960	3983	4014	4037	4068	4091
Guargum	MarNCDEX	6383	6464	6375	6404	6276	6325	6365	6414	6454	6503	6543
<b>OIL &amp; OIL SEEDS</b>												
Soybean	MarNCDEX	4750	4815	4750	4778	4682	4716	4747	4781	4812	4846	4877
RM seed	AprINCDEX	5215	5240	5186	5228	5142	5164	5196	5218	5250	5272	5304
CPO	FebMCX	1017.2	1022.4	1008.0	1011.1	991	999	1005	1014	1020	1028	1034
Soyoil	MarNCDEX	1120.0	1132.0	1119.6	1128.4	1109	1120	1121	1127	1134	1134	1146
Castor seed	MarNCDEX	4416	4444	4404	4418	4360	4382	4400	4422	4440	4462	4480
<b>CEREALS</b>												
Wheat	MarNCDEX	1815	1815	1815	1815	1815	1815	1815	1815	1815	1815	1815
Barley	AprNCDEX	1657	1657	1657	1657	1657	1657	1657	1657	1657	1657	1657
<b>OTHERS</b>												
Cocud^	MarNCDEX	2305	2345	2281	2314	2218	2249	2282	2313	2346	2377	2410
Kapas	Apr21 NCDEX	1223.5	1238.0	1221.0	1236.5	1209	1215	1226	1232	1243	1249	1260
Cotton	FebMCX	21460	21590	21410	21550	21263	21337	21443	21517	21623	21697	21803
Rubber	MarICEX	15596	15596	15596	15596	15596	15596	15596	15596	15596	15596	15596

Pivot Point: A predictive indicator of the market which is calculated as an average of significant prices from the performance of a market in the prior trading period. An open above the pivot point is generally considered bullish and vice versa.  
 S1, S2 & S3 are supports and R1, R2, and R3 are resistances from where a turnaround can be anticipated.  
 \*Open, High, Low and Close prices of previous trading day / ^ Cottonseed Oil Cake



Strong bias or bullish



Choppy or Sideways



Weak bias or bearish



Mild bullish bias



Mild bearish bias

### TRADING SIGNALS

Commodities	Intraday	Overall	Volatility		Short term		Medium term		Long term	
	View	View	1 day	Annualized	3 day EMA	5 day EMA	13 day EMA	22 day EMA	45 day EMA	60 day EMA
Pepper Mar ICEX	FLAT/CHOPPY	NEGATIVE	0.43%	6.9%	FLAT	FLAT	FLAT	NEGATIVE	NEGATIVE	POSITIVE
Jeera Mar NCDEX	POSITIVE	POSITIVE	0.97%	15.4%	POSITIVE	POSITIVE	POSITIVE	POSITIVE	POSITIVE	NEGATIVE
Turmeric Apr NCDEX	POSITIVE	HIGHLY POSITIVE	1.72%	27.3%	POSITIVE	POSITIVE	POSITIVE	POSITIVE	POSITIVE	POSITIVE
Cardamom Mar MCX	FLAT/CHOPPY	FLAT/CHOPPY	0.00%	0.0%	FLAT	FLAT	FLAT	FLAT	FLAT	FLAT
Dhaniya Apr NCDEX	POSITIVE	HIGHLY POSITIVE	1.13%	17.9%	POSITIVE	POSITIVE	POSITIVE	POSITIVE	POSITIVE	POSITIVE
Chana Mar NCDEX	FLAT/CHOPPY	POSITIVE	1.21%	19.2%	POSITIVE	NEGATIVE	POSITIVE	POSITIVE	POSITIVE	POSITIVE
Guarseed10 Mar NCDEX	POSITIVE	POSITIVE	0.80%	12.6%	POSITIVE	POSITIVE	POSITIVE	POSITIVE	POSITIVE	NEGATIVE
Guargum Mar NCDEX	POSITIVE	HIGHLY POSITIVE	0.89%	14.2%	POSITIVE	POSITIVE	POSITIVE	POSITIVE	POSITIVE	POSITIVE
Soybean Mar NCDEX	POSITIVE	HIGHLY POSITIVE	1.22%	19.3%	POSITIVE	POSITIVE	POSITIVE	POSITIVE	POSITIVE	POSITIVE
Ref. Soyoil Mar NCDEX	POSITIVE	HIGHLY POSITIVE	1.30%	20.6%	POSITIVE	POSITIVE	POSITIVE	POSITIVE	POSITIVE	POSITIVE
RMseed April NCDEX	POSITIVE	HIGHLY POSITIVE	1.09%	17.2%	POSITIVE	POSITIVE	POSITIVE	POSITIVE	POSITIVE	POSITIVE
CPO Feb MCX	POSITIVE	HIGHLY POSITIVE	1.29%	20.5%	POSITIVE	POSITIVE	POSITIVE	POSITIVE	POSITIVE	POSITIVE
Castor Mar NCDEX	FLAT/CHOPPY	NEGATIVE	0.64%	10.2%	POSITIVE	NEGATIVE	NEGATIVE	NEGATIVE	NEGATIVE	NEGATIVE
Kapas21 Apr NCDEX	POSITIVE	HIGHLY POSITIVE	0.69%	10.9%	POSITIVE	POSITIVE	POSITIVE	POSITIVE	POSITIVE	POSITIVE
Cotton Feb MCX	POSITIVE	HIGHLY POSITIVE	0.67%	10.6%	POSITIVE	POSITIVE	POSITIVE	POSITIVE	POSITIVE	POSITIVE
Cocudakl Mar NCDEX	POSITIVE	HIGHLY POSITIVE	1.54%	24.5%	POSITIVE	POSITIVE	POSITIVE	POSITIVE	POSITIVE	POSITIVE
Wheat Mar NCDEX	NEGATIVE	NEGATIVE	0.59%	9.4%	NEGATIVE	NEGATIVE	NEGATIVE	NEGATIVE	POSITIVE	POSITIVE
Barley Apr NCDEX	NEGATIVE	POSITIVE	1.14%	18.2%	FLAT	NEGATIVE	NEGATIVE	POSITIVE	POSITIVE	POSITIVE
Menthaoil Feb MCX	NEGATIVE	NEGATIVE	0.69%	11.0%	FLAT	NEGATIVE	NEGATIVE	NEGATIVE	NEGATIVE	NEGATIVE
Rubber Mar ICEX	NEGATIVE	NEGATIVE	0.57%	9.1%	NEGATIVE	NEGATIVE	POSITIVE	NEGATIVE	NEGATIVE	#N/A

Trading signals is prepared based on statistical analysis and is purely on technical indicators like exponential moving averages (EMAs), Relative strength Index (RSI) and stochastic, putting altogether provides an idea about intraday, short, medium and long term trend of the commodities. It also signals the risk of an investment in both agricultural and global commodities as well. Based on all listed indicators above, investors were able to fix a daily, near-term and long term trends. However, must be cautious especially for real-time intraday traders/jobbers.

**Trading Strategy based on EMA**

Trading strategies mentioned in the report is mainly based on 3, 5, 13, 22, 45 & 60 days exponential Moving Averages. 3 and 5 day EMA has taken for developing Intraday trading strategy, 13 days and 22 days EMA for Short term and Medium term, while 45,60 days EMA for Long term. Here, we use EMAs for POSITIVE and NEGATIVE signals. POSITIVE signal is formed when a short-term moving average (eg: 30 day) crosses from below a longer-term average (eg: 60 day), which is considered bullish. Likewise, NEGATIVE signal is formed when a short-term moving average (eg: 30 day) crosses from above a longer-term moving average (eg: 60 day), which is considered bearish.

**Intraday and Overall view** The section is consist of both Intraday and Overall view. The Intraday view is calculated by netting out of POSITIVES/NEGATIVES/FLAT signals formed in the short term trend. On the another part, Overall view is calculated by netting out number of POSITIVES/NEGATIVES/FLAT signals formed in the short, Medium and long term trend.

**Volatility** is a measure for dispersion of price of a financial instrument over a period of time by using Standard deviation and annualised actual volatility. Standard deviation is used to calculate one day volatility. Whereas, Annualized Actual Volatility (AAV) is measured as annualized standard deviation of the continuously compounded daily returns of the asset. Generally the thumb rule is that, higher the volatility higher the risk of the asset. See the table below the range risk ratings.

Annualised Volatility >	Risk %	Ratings	Risk %	Ratings	Risk %	Ratings	Risk %	Ratings	Risk %	Ratings
> 35%	> 35%	Very High risk	27 to 34%	High risk	20 to 26%	Moderate risk	11 to 19%	Low risk	1 to 10%	Very Low risk



## GENERAL DISCLOSURES & DISCLAIMERS:

### CERTIFICATION,

We, Vinod T P, Hareesh V and Anu V Pai, employee of Geojit Financial Services Limited (GFSL), author of this report, hereby certify that all the views expressed in this research report (report) reflect my/ our personal views about any or all of the subject issuer or securities/ commodities.

### DISCLAIMER

This report has been prepared by GFSL and the report & its contents are the exclusive property of GFSL and the recipient cannot tamper with the report or its contents in any manner and the said report, shall in no case, be further distributed to any third party for commercial use, with or without consideration.

GFSL has taken steps to ensure that facts in this report are based on reliable information but cannot testify, nor make any representation or warranty, express or implied, to the accuracy, contents or data contained within this report. It is hereby confirmed that wherever GFSL has employed a rating system in this report, the rating system has been clearly defined including the time horizon and benchmarks on which the rating is based.

Descriptions of any Commodity or Commodities mentioned herein are not intended to be complete and this report is not, and should not be construed as an offer or solicitation of an offer, to buy or sell any commodity or other financial instruments. GFSL has not taken any steps to ensure that the commodity/(ies) referred to in this report are suitable for any particular investor. This Report is not to be relied upon in substitution for the exercise of independent judgment. Opinions or estimates expressed are current opinions as of the original publication date appearing on this Report and the information, including the opinions and estimates contained herein, are subject to change without notice. GFSL is under no duty to update this report from time to time.

### RISK DISCLOSURE

Geojit Financial Services Limited and/or its Affiliates and its officers, directors and employees including the analyst/authors shall not be in any way be responsible for any loss or damage that may arise to any person from any inadvertent error in the information contained in this report. Investors may lose his/her entire investment under certain market conditions so before acting on any advice or recommendation in these material, investors should consider whether it is suitable for their particular circumstances and, if necessary, seek professional advice. This report does not take into account the specific investment objectives, financial situation/circumstances and the particular needs of any specific person who may receive this document. The user assumes the entire risk of any use made of this information. Each recipient of this report should make such investigation as it deems necessary to arrive at an independent evaluation of an investment in the Commodity/(ies) referred to in this report (including the merits and risks involved). The price, volume and income of the investments referred to in this report may fluctuate and investors may realize losses that may exceed their original capital.

The investments or services contained or referred to in this report may not be suitable for all equally and it is recommended that an independent investment advisor be consulted. In addition, nothing in this report constitutes investment, legal, accounting or tax advice or a representation that any investment or strategy is suitable or appropriate to individual circumstances or otherwise constitutes a personal recommendation of GFSL.

### REGULATORY DISCLOSURES:

Geojit Financial Services Limited's Associates consists of companies such as Geojit Technologies Private Limited (GTPL- Software Solutions provider), Geojit Credits Private Limited (GCPL- NBFC Services provider), Geojit Investment Services Limited (GISL- Corporate Agent for Insurance products), Geojit Financial Management Services Private Limited (GFMSL) & Geojit Financial Distribution Private Limited (GFDPL), (Distributors of Insurance and MF Units). In the context of the SEBI Regulations on Research Analysts (2014), Geojit Financial Services Limited affirms that we are a SEBI registered Research Entity and we issue research reports /research analysis etc that are prepared by our Research Analysts. We also affirm and undertake that no disciplinary action has been taken against us or our Analysts in connection with our business activities.

In compliance with the above mentioned SEBI Regulations, the following additional disclosures are also provided which may be considered by the reader before making an investment decision:

#### 1. Disclosures regarding Ownership:

GFSL confirms that:

It/its associates have no financial interest or any other material conflict in relation to the subject Commodity futures covered herein at the time of publication of this report.

Further, the Research Analyst confirms that:

He, his associates and his relatives have no financial interest in the subject Commodity futures covered herein, and they have no other material conflict in the subject Commodity at the time of publication of this report.

#### 2. Disclosures regarding Compensation:

During the past 12 months, GFSL or its Associates have not received any compensation or other benefits from any entity/ third party in connection with the Commodity futures mentioned in this report.

#### 3. Disclosure regarding the Research Analyst's connection with the Commodity futures:

It is affirmed that we, Vinod T P, Hareesh V and Anu V Pai, employed as Research Analysts by GFSL and engaged in the preparation of this report have no substantial ownership or financial interest over any Commodity futures mentioned in the report.

#### 4. Disclosure regarding Market Making activity:

Neither GFSL nor its Research Analysts have engaged in market making activities for the subject Commodity futures.

Copyright in this report vests exclusively with GFSL

Geojit Financial Services Ltd., 34/659-P, Civil Line Road, Padivattom, Kochi - 682024  
Toll-Free Number: 1800-425-5501 / 1800-103-5501, Paid Number: 91 - 484 - 2901000  
Research Entity SEBI Registration Number: INH200000345  
Email id: customercare@geojit.com, Web: www.geojit.com

SEBI Stock Broker Registration No INZ000104737, Research Entity SEBI Reg No: INH200000345, Investment Adviser SEBI Reg No: INA200002817, Portfolio Manager: INP000003203, SEBI Registration No. Stock Broker: INZ000104737 / Depository Participant: IN-DP-325-2017, ARN Regn.Nos:0098, IRDA Corporate Agent (Composite) No.: CA0226.